

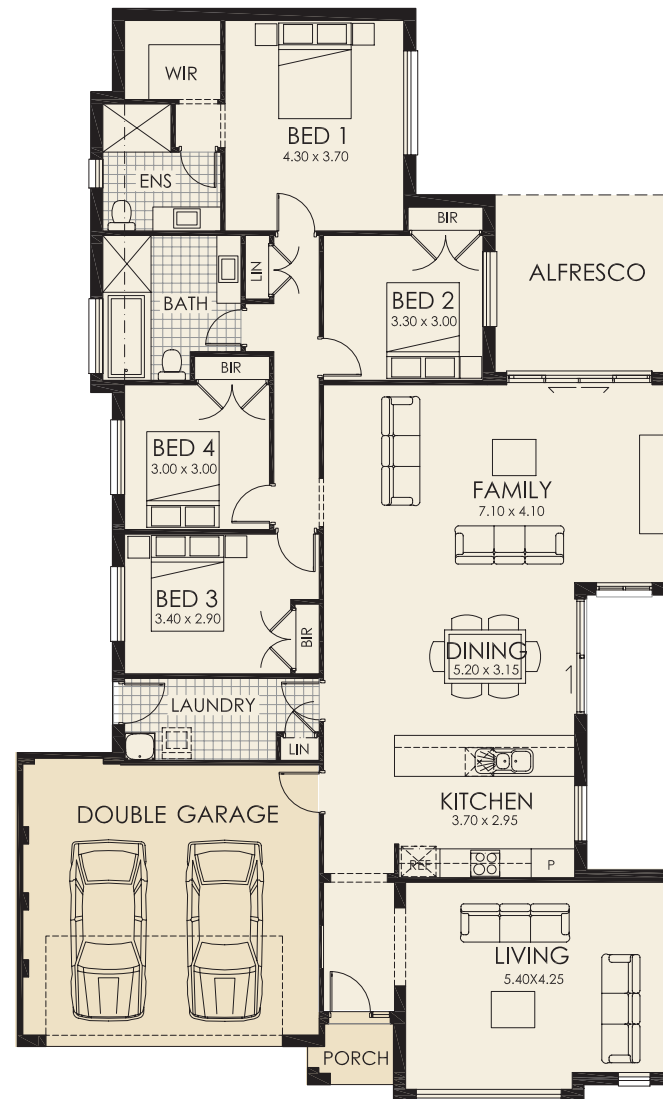
LINDEMAN

The Lindeman from Rawson Homes integrates a design that radiates its living areas from its central core creating a home that delivers on today's fashionable combined outdoor/ indoor living wants & needs.

Open plan may not fully describe the vitality that this design creates as you will find when you flow easily from casual to more sophisticated living. The heart of this home, the designer kitchen will enable perfect entertaining be it for evening celebrations or for simple brunch on Sundays. Though if it is getting a little rowdy the separate additional living space provides an elegant retreat for you & your guests. Also mindful of the everyday needs of a family this home combines the ease of use of the garage & spacious laundry being fully accessible to everyone. Indefinable style continues through to the choices available in the outer facade where your design sensibility or more flamboyant side can take flight. Style, integrity and an attunement with space make this design a very clever solution to your desire for the perfect home.

- Tastefully designed
- Four bedrooms all with built-ins
- Walk in robe and ensuite to master bedroom
- Large family/dining area opening onto alfresco area
- Additional separate living area
- Internal access from double garage
- Convenient large laundry

Dimensions	
Overall depth	22.630m
Overall width	13.690m
Areas (including alfresco)	
Floor plan	189.21m ²
Porch	2.08m ²
Double garage	36.98m ²
Total	228.27m²
	24.5 squares



Floor Plan
(suits Classic facade)



Casual Living
Optional alfresco area



30 years experience



see more at www.rawsonhomes.net.au



RAWSON HOMES