

KERLEW

The Kerlew from Rawson Homes brings the elements of a modern attractive exterior together with an internal space of portions that are not only clever in their design but also provide you with a truly flexible home.

Ebb & flow has been the major direction of this homes design, providing for ease of everyday living as you & yours spread yourselves out in this homes multiple living spaces. Not to mention how its flexibility will evolve with you as the needs of your family change. Attention to your needs for privacy have also been focused upon with the master bedroom providing the perfect place for solitude with an opulence of space. Not to mention the harmonising effect the flow through walk in robe & ensuite will bring to your soul along with the fact that it has been decked out with all of life's little luxuries. This home of more than generous living areas, combined with sophisticated & thoughtful areas of seclusion, make this design a home of modern elegance that will become a classic.

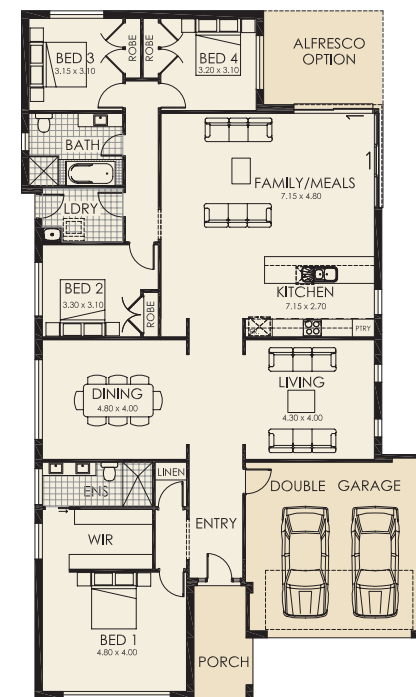
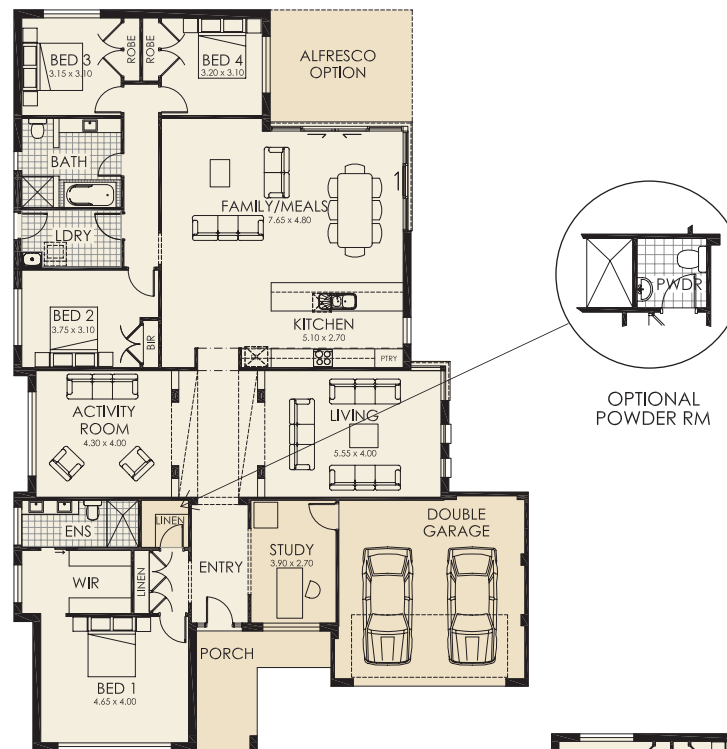
Kerlew 31 Dimensions	
Overall depth	23.500m
Overall width	16.320m
Areas	
Floor plan	245.77m ²
Porch	10.04m ²
Double garage	36.53m ²
Total	292.34m²
	31.5 squares

Kerlew 28 Dimensions	
Overall depth	23.100m
Overall width	13.350m
Areas	
Floor plan	216.46m ²
Porch	7.12m ²
Double garage	37.44m ²
Total	261.02m²
	28 squares

Kerlew 31 Floor Plan
(suits Classic facade)

- Designed for entertaining
- Four bedrooms all with built-ins
- Walk in robe and ensuite to master bedroom
- Separate living and activities areas
- Huge family and meals area
- Modern open plan
- Separate study area
- Optional powder room
- Choice of facades

Kerlew 28 Floor Plan
(suits Classic facade)



Versatile design

Great for entertaining



30 years experience



see more at www.rawsonhomes.net.au

