

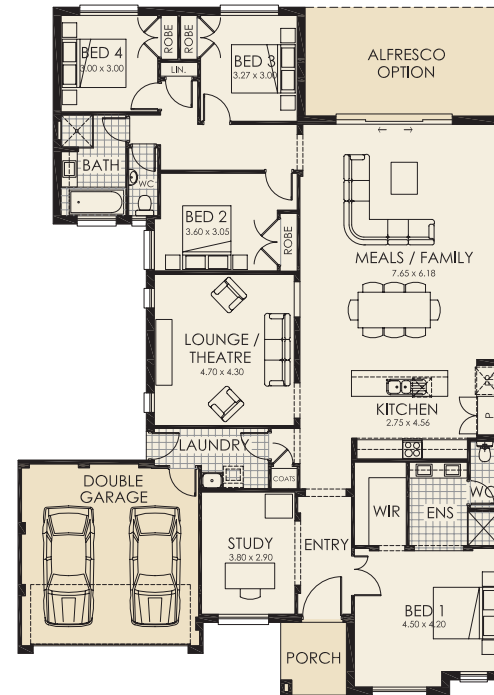
BROOKFIELD

The Brookfield from Rawson Homes is where the extra-ordinary needs of a family are met & executed with finesse in a home that is no ordinary abode.

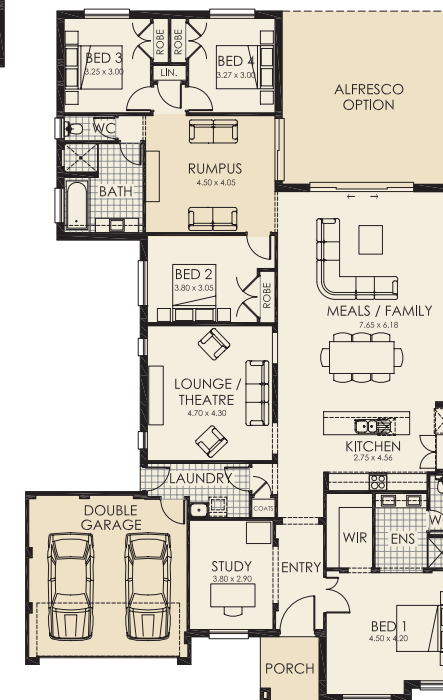
Upon entering your expectations are immediately buoyed as the unity & utility of the design become apparent. Firstly the ample study, long entry & sumptuous master suite with its ensuite & spacious walk in robe will have you thinking of a luxurious hotel suite. Perfect for those decadent me time moments. But as you move further into this home the extravagance of space will envelop you and it is within its open plan living area you will find the perfect setting for entertaining as you flow from kitchen to living to outdoors. Not to mention the sizeable home theatre room, the movies really will come to life on the big screen here. Then there's the kiddie friendly zone, they'll absconder away into their own space complete with large bathroom, separate WC & spacious double bedrooms. An abode fit for family life, ready for a lifetime of entertainment & joy.

- Designed for the family
- Four bedrooms all with built-ins
- Walk in robe and ensuite to master bedroom
- Separate living and dining areas
- Central family and meals area
- Light filled entrance
- Optional additional rumpus room
- Modern facades

| Dimensions | |
|---------------------------|----------------------------|
| Overall depth | 21.360m |
| Overall depth with rumpus | 24.000m |
| Overall width | 15.200m |
| Areas | |
| Floor plan | 215.11m ² |
| Floor plan with rumpus | 231.69m ² |
| Porch | 4.61m ² |
| Double garage | 33.33m ² |
| Total | 253.05m² |
| | 27.2 squares |
| Total with rumpus | 269.63m² |
| | 29 squares |



Floor Plan
(suits Urban facade)



Floor Plan with Rumpus
(suits Urban facade)



Extravagant spacious design

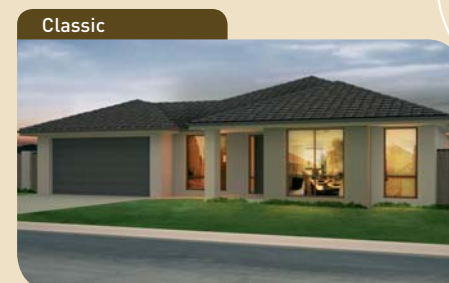
Kiddie friendly zone



30 years experience



see more at www.rawsonhomes.net.au



RAWSON HOMES