

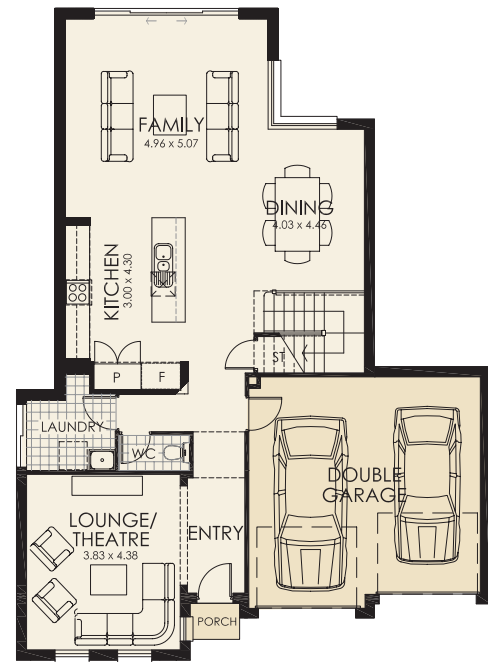
BENHAM

The Benham from Rawson Homes combines sublime contours & architectural lines into a fusion that is worthy of celebration.

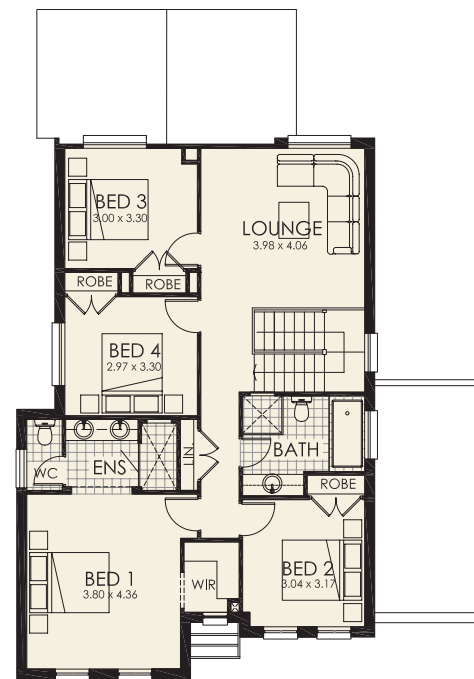
At first glance this home will intrigue & delight as it reveals its dominant open living areas & spacious bedrooms ready for seclusion or fun filled entertaining. The hub of the home the kitchen with its ultra modern styling provides the perfect place to entertain your guests & still be a part of the action. With its open plan living, dining & potential outdoor areas all working in tandem this home is perfect for entertaining. Even if it is just to kick back & watch your favourite movie in the separate theatre room. Climb upstairs & the generous space is re-iterated in the large double bedrooms, additional living zone & of course let us not forget the sumptuous master suite. Here you can retreat into your own sweet sanctuary, enjoying the luxurious features included in the ensuite & spacious walk in robe. Urban livings impact will not mark you as you retreat to an abode that impresses the senses but is in every essence a home.

- Designed for entertaining
- Four bedrooms all with built-ins
- Walk in robe and ensuite to master bedroom
- Contemporary open plan kitchen/living/dining area
- Theatre Room
- Convenient separate WC
- Internal access from double garage

Dimensions	
Overall depth	16.245m
Overall width	11.810m
Areas	
Ground Floor plan	105.05m ²
First Floor Plan	108.57m ²
Porch	1.10m ²
Double garage	35.57m ²
Total	250.29m²
	27 squares



Ground Floor Plan

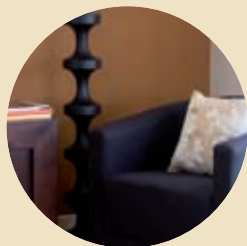


First Floor Plan
(suits Urban facade)



Ultra modern styling

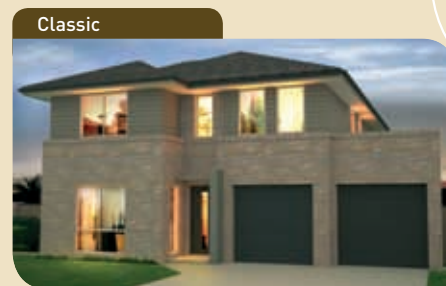
Great for entertaining



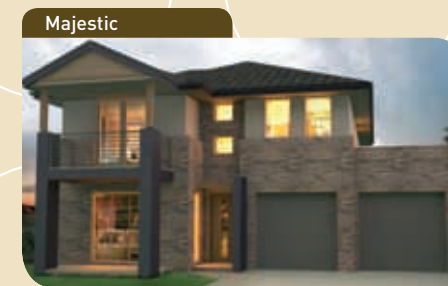
30 years experience



see more at www.rawsonhomes.net.au



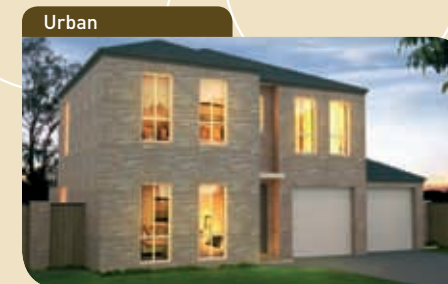
Classic



Majestic



Metro



Urban



RAWSON HOMES