

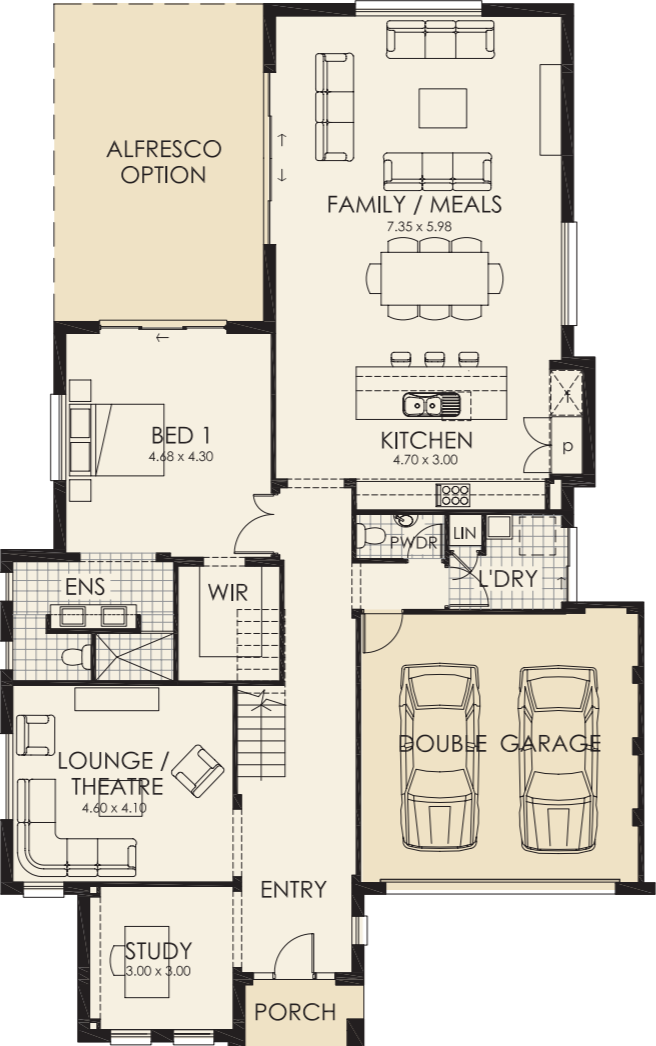
# BEDARRA

The chameleon of modern designs, this homes creative aspects and designer features abound with uber cool elements.

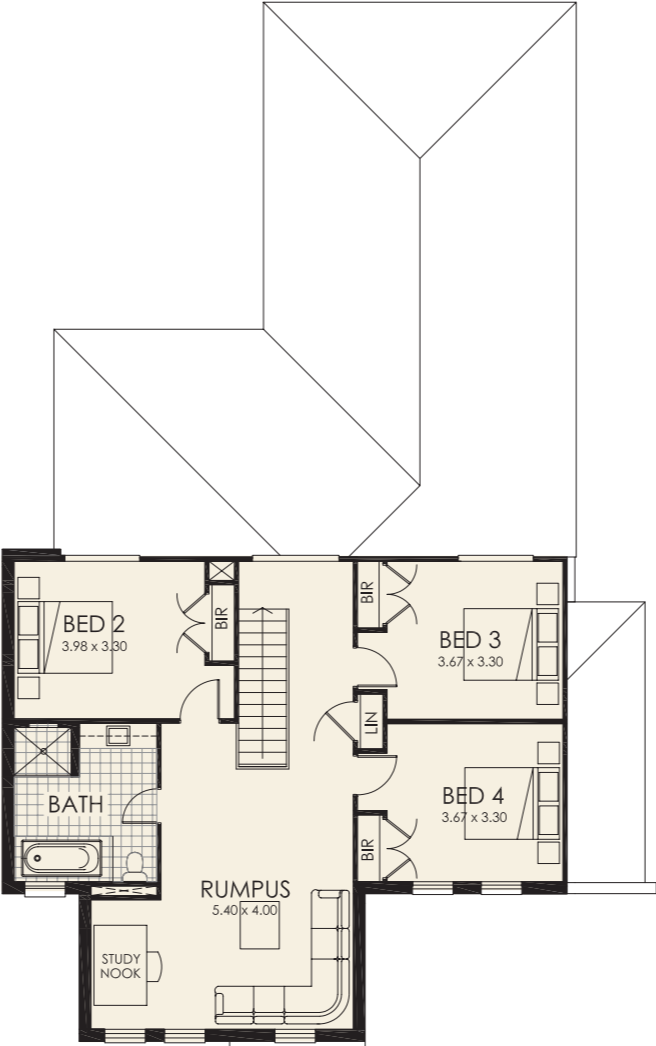
Moments of pleasure are the focus of this design, relaying them into a constant reality as you enjoy each aspect of this home. Be it watching a movie in the theatre room, a quick nap in the master suite, or a simple breakfast in the spacious kitchen every moment will bring a smile to your face. Upstairs has been created especially to cater to the expanding family, with separate rumpus area, large double bedrooms and kiddie friendly bathroom. Downstairs is where family life will be full of laughter and luxurious living as you entertain the smallest or largest of gatherings. The different façade options only make this design all the more enticing. This is a home designed to create perfect moments that will be yours for an eternity.

- Designed for entertainment
- Four bedrooms all with built-ins
- Walk in robe and ensuite to master bedroom
- Separate lounge/theatre room
- Family and meals area
- Alternative ground floor plan
- Internal access from double garage
- Modern facades

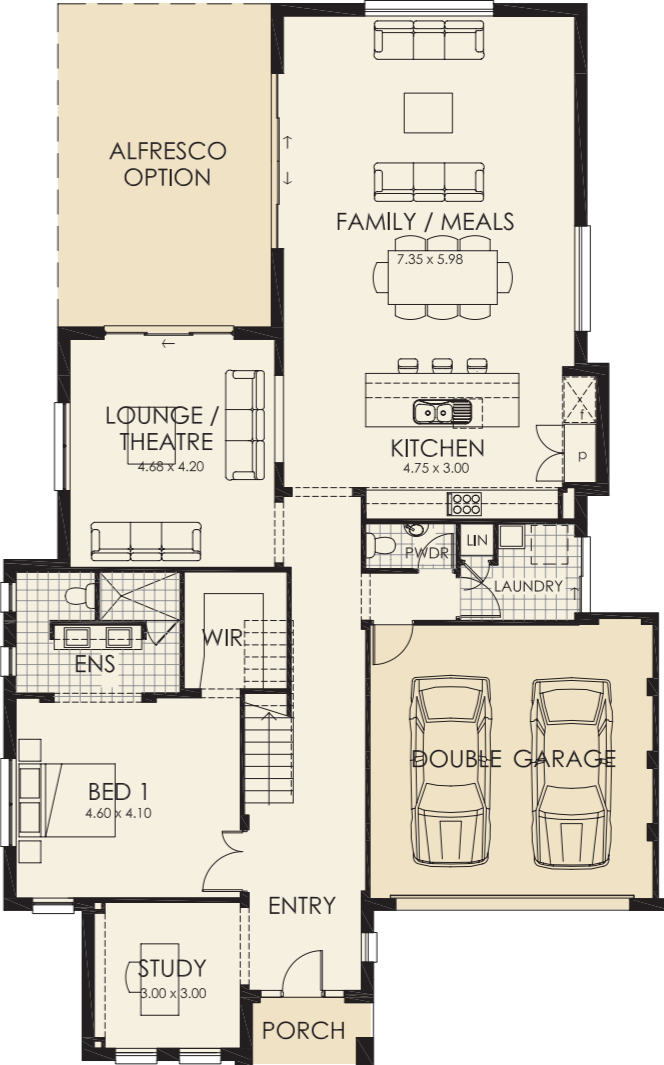
Dimensions	
Overall depth	21.730m
Overall width	13.700m
Areas	
Ground floor plan	172.20m <sup>2</sup>
First floor plan	102.20m <sup>2</sup>
Porch	3.24m <sup>2</sup>
Double garage	35.20m <sup>2</sup>
<b>Total</b>	<b>312.84m<sup>2</sup></b>
	<b>33.5 squares</b>



Ground Floor Plan  
[suits Urban facade]



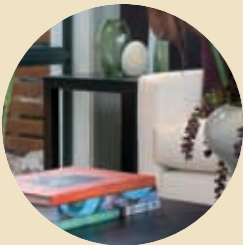
First Floor Plan  
[suits Urban facade]



Alternative Ground Floor Plan  
[suits Urban facade]



Spacious family living  
Stylish modern design



30 years experience



see more at [www.rawsonhomes.net.au](http://www.rawsonhomes.net.au)



RAWSON HOMES